


# BLUE BIRD OPTIONS BROCHURE



Specifications, features, illustrations and equipment shown in this brochure are based upon the latest available information at the time of printing. Although descriptions are believed to be correct, accuracy cannot be guaranteed. Blue Bird Body Company reserves the right to make changes at any time without notice. Some features mentioned herein are not available in all models. Please see your Blue Bird Dealer for details. Blue Bird Body Company does not represent or warrant that its products are fit for a particular purpose. Purchaser must independently determine the suitability of the Blue Bird products for their particular application. All images contained herein are either owned by Blue Bird Body Company or used under a valid license. All trademarks used herein are registered trademarks of Blue Bird Body Company. It is a violation of federal law to reproduce these images without express written permission from Blue Bird Body Company. SB-OPTIONS BROCHURE-1014© 2014 Blue Bird Corporation



 [blue-bird.com](http://blue-bird.com)

BLUE BIRD IS PLEASED TO SHOWCASE  
OUR MOST POPULAR OPTIONS.  
FOR ADDITIONAL OPTIONS NOT LISTED,  
CONTACT YOUR LOCAL BLUE BIRD  
DEALER OR VISIT BLUE-BIRD.COM.

V  
VISION



FE  
FRONT ENGINE



RE  
REAR ENGINE



Options shown were in effect on the date they were approved for printing. In keeping with our policy of continual product improvement, Blue Bird reserves the right to change options without notice and without incurring obligations. Some equipment and features shown may be optional- contact your Blue Bird Dealer for more details.



## HERE'S WHAT'S NEW!



### WE'RE CONSTANTLY ADVANCING

Blue Bird never stops improving its product line. That's why we are excited to announce new features that make our products even better—continuing our tradition of being best-in-class. With our proven commitment to innovation, Blue Bird really does have a heritage of looking ahead.

## BLUE BIRD Air Conditioning



- Driver A/C Dash Evaporator is standard
- System is not an "aftermarket" installation
- No seat and body plan limitations on special needs buses
- System does not intrude into seating area
- Common design in Vision and All American bus models
- No custom parts for ease of service

## ENHANCED LUGGAGE COMPARTMENT

- Full Perimeter Bulb Seal
- New Latches
- Door Reinforcement



A heritage of looking ahead.



# BLUE BIRD E-Z WINDOWS™

## AN INNOVATION IN WINDOWS!



### SMOOTH, INTERLOCKING OPERATION

See your world like never before with Blue Bird E-Z Windows™! With features such as a hollow frame construction, smoother operation, ergonomic dual-grip latches, and robust exit handles; our windows offer a clear, leak-resistant advantage. Experience our Blue Bird E-Z Windows™ by contacting your local Blue Bird dealer today!

- Smooth Operation
- Interlocking Construction
- Leak-resistant Seals
- Ergonomic Latches

Blue Bird E-Z Windows™ Feature Superior Leak Resistance and Ease of Service



A heritage of looking ahead.



blue-bird.com

## Advanced Technology from Bendix®

### Bendix® ADB22X™ air disc brakes Advanced braking technology from the Industry Leader



#### Technology designed to create the perfect stop.

Bendix air disc brakes have a two-pin floating caliper design that provides more stringent overall dimensional accuracy and consistent force distribution. These advancements, as well as a specially designed 17-inch rotor coupled with proprietary friction material, provides the ADB22X model with many advantages over other air disc and drum brakes.

Blue Bird is proud to offer the newly designed Bendix® ADB22X™ air disc brakes, which provide surer, safer stops. They require less maintenance, deliver longer pad and rotor life, and they cut service time in half – all of which adds up to less bus downtime, and lowers your total cost of ownership. Be sure to contact your local dealer today for more information about our air disc brake offering!

## BENDIX® ESP® FULL STABILITY SYSTEM An intelligent investment in stability for school buses

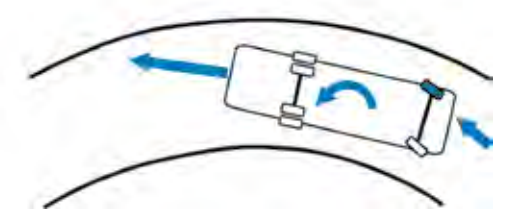
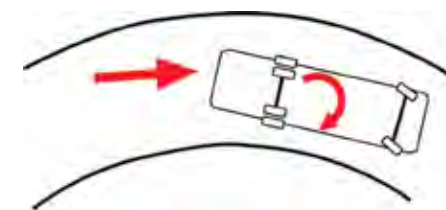
### Bendix® ESP® Full Stability System – What is it and how does it work?

#### Driving Scenario:

The vehicle speed around a curve exceeds the ability for the tires to hold the vehicle orientation, causing the vehicle to slide and begin to over-steer. The momentum of the load further pushes the vehicle, making the situation worse.

#### System Response:

The Bendix ESP full stability system senses the driver's intended path and compares it to the actual situation to identify an over-steer condition. In an attempt to correct the vehicle orientation and reduce speed, if required, the system quickly applies braking pressure to only the appropriate wheels. (The Bendix ESP system reacts similarly for under-steer situations.)



Contact your local Blue Bird Dealer to learn more about Bendix ESP!

[www.blue-bird.com/findadealer](http://www.blue-bird.com/findadealer)

Expected Availability Spring 2015



**BLUE BIRD CONNECT™**
**V FE RE**

This GPS fleet management system provides everything needed to track, manage and improve your fleet operations, including driver time and attendance, engine diagnostics, and real-time student tracking.

**CONNECT DRIVER'S KEYPAD**
**V FE RE**

The driver's keypad offers increased freedom and convenience to allow drivers to enter their time and attendance remotely and provide real-time communication.


**BLUE BIRD CONNECT™**

**CONNECT DRIVER'S KEYPAD**
**CONNECT DRIVER'S TABLET**
**V FE RE**

This Android touch screen tablet offers increased freedom and convenience to allow drivers to enter their time and attendance remotely, complete checklists for pre-trip and post-trip inspection, and use the tablet for turn-by-turn navigation.


**CONNECT DRIVER'S TABLET**
**CONNECT RFID CARD READER**
**V FE RE**

Tracks the status of students boarding or exiting the bus in real time to increase passenger safety. RFID is a fast and efficient way to track students when loading and unloading and to confirm proper bus routes and stops.


**CONNECT RFID CARD READER**
**CONNECT BARCODE READER**
**V FE RE**

Tracks the status of students boarding or exiting the bus in real time to increase passenger safety. Barcode readers are a fast and efficient way to track students when loading and unloading and confirm proper bus routes and stops.


**CONNECT BARCODE READER**
**CONNECT DISTRESS BUTTON**
**V FE RE**

Drivers can immediately report problems and emergencies by simply pushing Blue Bird Connect's Driver Distress Button. It increases passenger and driver safety by allowing the driver to alert the fleet manager for immediate assistance.


**CONNECT DISTRESS BUTTON**

**ELECTRICAL ACCESS LOCK**

**AIR CONDITIONING SYSTEM**
**ELECTRICAL ACCESS LOCK**
**V FE RE**

Secures the outside electrical load center access panel with a lockable latch.

**BLUE BIRD AIR CONDITIONING**
**V FE RE**

Cool down with Blue Bird's air conditioning systems. Blue Bird offers a range of fully automatic climate control systems, and the high performance units ensure comfort in all-weather conditions for the passengers as well as the driver.


**LED DIRECTIONAL LIGHTS**

**FENDER DIRECTIONAL LIGHTS**
**LED DIRECTIONAL LIGHTS**
**FE RE**

Includes 7" amber LED directional lights on the front of the bus. Long-life LED lighting provides low amperage draw, increased reliability, better safety performance, and reduced maintenance costs.

**LED FENDER LIGHTS**
**V**

Provides "lollipop" style directional lights mounted on the front fender to further alert motorists. Long-life LED lighting provides low amperage draw, increased reliability, better safety performance, and reduced maintenance costs.

**LED INTERIOR DOME LIGHTS**
**V FE RE**

Illuminates the passenger compartment with LED dome lights that are comparable to 15 candlepower incandescent lights. Long-life LED lighting provides low amperage draw, increased reliability, better safety performance, and reduced maintenance costs.


**LED INTERIOR DOME LIGHTS**

**LED TAIL LIGHT**
**LED TAIL LIGHT**
**V FE RE**

Signals an approaching stop with a 4" or 7" round LED stop/tail light on the left and right tag panels. Long-life LED lighting provides low amperage draw, increased reliability, better safety performance, and reduced maintenance costs.



#### 4" LED BACK-UP LIGHT

**V FE RE**

Enhances the driver's visibility when backing up with a 4" round LED back-up light. Long-life LED lighting provides low amperage draw, increased reliability, better safety performance, and reduced maintenance costs.



4" LED BACK-UP LIGHT

#### LOADING SPOTLIGHTS

**V FE RE**

Offers additional safety by lighting the loading zone and street crossings in low light or dark conditions.



LOADING SPOTLIGHTS

#### LED STEPWELL LIGHT

**V FE RE**

Illuminates the entrance boarding area with a LED light. Long-life LED lighting provides low amperage draw, increased reliability, better safety performance, and reduced maintenance costs.



LED STEPWELL LIGHT

#### LED LIFT BOARDING LIGHT

**V FE RE**

Illuminates the lift boarding area with a LED light. Long-life LED lighting provides low amperage draw, increased reliability, better safety performance, and reduced maintenance costs.



LED LIFT BOARDING LIGHT

#### ROOF STROBE LIGHT

**V FE RE**

This high intensity, 16-joule, double-flash, roof-mounted, white strobe light provides motorists with an additional visual alert in the dark morning, at night, or during inclement weather.



ROOF STROBE LIGHT

#### SINGLE LUGGAGE

**V FE RE**

The underfloor, skirt-mounted, storage compartment accommodates items not secured in the passenger compartment. The compartment is 16 cubic feet with 1 door. It includes key locks and sealed doors to protect contents.



SINGLE LUGGAGE



DOUBLE LUGGAGE



PASS-THRU LUGGAGE

#### DOUBLE LUGGAGE

**V FE RE**

The underfloor, skirt-mounted, storage compartment accommodates items not secured in the passenger compartment. The compartment is 28.4 cubic feet with 2 doors. It includes key locks and sealed doors to protect contents.

#### PASS-THRU LUGGAGE

**RE**

The underfloor, pass-through storage compartment accommodates items not secured in the passenger compartment. This compartment provides 122 cubic feet of storage space under full width of the bus body and black vinyl floor covering.



TOOL COMPARTMENT



LOCKABLE DASH GLOVE BOX

#### TOOL COMPARTMENT

**V FE RE**

Neatly stores tools out of the way in a side-mounted tool compartment below the floor.

#### LOCKABLE DASH GLOVE BOX

**V**

Provides a glove box built into the dash to store documents and other small necessities.

#### DRIVER'S DOCUMENT POUCH

**V FE RE**

Provides a 17" x 12" x 4" document pouch located on the front of the first barrier on the driver's side.



DRIVER'S DOCUMENT POUCH



OVERHEAD STORAGE

#### OVERHEAD STORAGE

**V FE RE**

Provides a locking overhead storage compartment, with a 30 lb load capacity, above the driver's left shoulder, with a switch and alarm.



**BATTERY ROLLER TRAY**
**V FE RE**

Gain easy access to batteries with this chassis-mounted battery compartment with a rolling tray that handles 4 group 31 batteries or 2 8D batteries.


**BATTERY ROLLER TRAY**
**FLAT FLOOR**
**V FE RE**

Features a flat, non-raised floor without rear wheelhousings that's ideal for special needs' buses when additional wheelchair space is needed, without going to a longer bus length.


**FLAT FLOOR**
**SCHOOL ACTIVITY BUS (MFSAB)**
**V FE RE**

Provides all of the safety construction features of a school bus without traffic control devices. Paint your school's colors for buses that specialize in activity trips.


**SCHOOL ACTIVITY BUS (MFSAB)**
**AIR DEFLECTOR**
**V FE RE**

Adds a roof-mounted spoiler to the rear roof cap of the bus that deflects air down across the rear windows of the bus to aid in clearing snow and dust.


**AIR DEFLECTOR**
**REAR EMERGENCY LOCK**
**RE**

Provides a sliding bolt to prevent the door from being opened from the outside when the lock is engaged. For additional safety, the engine does not start when the door is locked.


**REAR EMERGENCY DOOR LOCK**
**ENTRANCE DOOR RELEASE**
**V**

Provides a non-locking handle located in the right hand cowl forward of the entrance door. The handle releases the entrance door manual control to allow access into the bus.


**ENTRANCE DOOR RELEASE**

**RELOCATED RELEASE**

**28" EMERGENCY DOOR**
**RELOCATED RELEASE**
**V FE RE**

This feature will relocate the emergency release door valve from the door header of pneumatic operated doors to the dash area.

**28" EMERGENCY DOOR**
**V FE RE**

This 28" emergency door is installed on the left side of the bus with clear, tinted, tempered, or laminated glass and minimal obstruction for an efficient exit path.


**35" EMERGENCY DOOR**

**SIDE EMERGENCY DOOR LOCK**
**35" EMERGENCY DOOR**
**V FE RE**

This 35" emergency door is installed on the right side of the bus with clear, tinted, tempered, or laminated glass and minimal obstruction for an efficient exit path.

**SIDE EMERGENCY DOOR LOCK**
**V FE RE**

Provides 2 vertical bars to the door lock mechanism for a 3-point bar lock on the side and/or emergency door.

**AIR-OPERATED DOORS**
**V FE RE**

Front, outward opening entrance doors that are activated by an air cylinder, with an electrically controlled valve assembly located over the door and a rocker-type switch accessible to a seated driver.


**AIR-OPERATED DOORS**

**ELECTRIC-OPERATED DOORS**
**ELECTRIC-OPERATED DOORS**
**V FE RE**

Front, outward opening entrance doors that are operated by an electric actuator controlled by a spring loaded "open/close" switch in the driver's area.



## LEFT HAND ENTRANCE DOOR

**V**  
Provides a left side, air powered, outward opening entrance door directly behind the driver that has the capability to pick-up and discharge passengers from both sides of the bus. Ideal for communities with one-way streets.

## CHROME DOOR CONTROL

**V**  
Provides a manual door installation with a heavy-duty, chrome-plated rod with a black, epoxy-coated, mounting base.



LEFT HAND ENTRANCE DOOR



CHROME DOOR CONTROL

## ENTRANCE DOOR LOCK

**V FE RE**  
Secure the entrance door by installing this secured keyed lock mechanism that includes a steel rod extending to the header.



ENTRANCE DOOR LOCK



EMERGENCY DOOR GLASS

## EMERGENCY DOOR GLASS

**V FE**  
The rear emergency door glass comes in laminated or tempered glass in multiple opacities from clear to a dark tint. The upper and lower sections of the door can be ordered in various combination of the options.

## ENTRANCE DOOR GLASS

**V FE RE**  
The entrance door glass is available in clear, tinted, laminated or tempered glass. The upper and lower sections of the door can be ordered in various combination of the options.



ENTRANCE DOOR GLASS

## DRIVER CUP HOLDER

**V FE RE**  
This cup holder is easily accessible on the right side of the driver.



DRIVER CUP HOLDER



DRIVER PADDED ARMREST



DRIVER'S TRASH CAN

## DRIVER PADDED ARMREST

**V**  
Provides a padded armrest on the left side of the driver, mounted to the driver's console.

## DRIVER'S TRASH CAN

**V**  
Provides an 8-quart removable trash container located in the driver's area.



6" DRIVER AUXILIARY FAN



PLYWOOD FLOOR

## 6" DRIVER AUXILIARY FAN

**V FE RE**  
Keeps the driver comfortable with a 6" auxiliary fan mounted above the driver's window or to the center of the windshield header.

## PLYWOOD FLOOR

**V FE RE**  
Provides a 5/8" thick plywood subfloor for thermal and acoustic insulation. The plywood subfloor is also available in marine grade and treated.

## STAINLESS STEEL FLOOR TRIM

**V FE RE**  
Give the floor a customized look by installing our stainless steel floor trim that extends the entire length of the passenger compartment.



STAINLESS STEEL FLOOR TRIM



WEBASTO SCHOLASTIC HEATER

## WEBASTO SCHOLASTIC HEATER

**V FE RE**  
Diesel-fuel fired 40K BTU coolant heater with a 7 day timer that provides supplemental heat to reduce wear and assist in heater performance in cold climates.



### ESPAR AUXILIARY HEATER

**V FE RE**

Diesel-fuel fired 17K BTU coolant heater that provides supplemental heat to the engine to reduce wear and assist in heater performance in cold climates.



ESPAR AUXILIARY HEATER

### ENTRANCE STEP DE-ICER

**V FE RE**

This electric heater under the step plate provides an 18" wide ice-free area on the lower 2 steps.



ENTRANCE STEP DE-ICER

### SILICONE HEATER HOSES

**V FE RE**

Provides durable silicone heater hoses and constant tension, spring-loaded, screw-type hose clamps for the body heater system, both from and to the engine water cut-off valves.



SILICONE HEATER HOSES

### CONVECTION HEATING

**V**

This convection heating provides balanced heat for floor to ceiling comfort with no blowers that stir up dust, low amperage, and a virtually maintenance free system.



CONVECTION HEATING

### REAR HEATER

**V FE**

Provides a 40k-80k BTU wall-mounted heater in the rear left or right corner that frees up floor space in the passenger compartment for wheelchair securement tracks.



REAR HEATER

### FRONT STEPWELL HEATER

**V**

Provides forced air heat to aid in stepwell de-icing and entrance door de-fogging. It provides additional heat in the front of the bus, includes adjustable outlets and has multiple speed settings.



FRONT STEPWELL HEATER



FLOOR-MOUNTED HEATER



ACOUSTIC PANELS

### FLOOR-MOUNTED HEATER

**V FE RE**

Provides recirculating floor-mounted heaters that range from 50k-80k BTU, available under the seat on the left and/or right hand side.

### ACOUSTIC PANELS

**V FE RE**

Provides full length, perforated headlining panels to reduce engine, environmental, and passenger noise level.

### BODY INSULATION

**V FE RE**

Effectively insulates the bus body to better manage and control the temperature and noise levels.



BODY INSULATION



LIFT DOOR (45" W X 58" H)

### LIFT DOOR (45" W X 58" H)

**V FE RE**

Specifically engineered to work with our various wheelchair lift systems. The side lift door is 45" wide and 58" tall and can be installed in various locations on all bus models.

### LIFT DOOR (44.5" W X 69" H)

**V FE RE**

Specifically engineered to work with our various wheelchair lift systems. The ADA compliant side lift door is 44.5" wide and 69" tall and can be installed in various locations on most units.



LIFT DOOR (44.5" W X 69" H)



RICON K5511 LIFT

### RICON K5511 LIFT

**V FE RE**

Provides the Ricon Klearvue Series wheelchair lift system that features a folding platform for increased viewing over the platform from the interior and exterior of the bus.



### BRAUN'S NL919FIB-2 LIFT

**V FE RE**

This lift system has power up and gravity down controls to conserve power with a manual back-up system. Braun's Quiet-Ride Package provides reliable lifting power that remains rattle-free while stowed during transit.



BRAUN'S NL919FIB-2 LIFT



RICON S5510-ADA/403 LIFT

### RICON S5510-ADA/403 LIFT

**V FE RE**

This lift system has an 800 lb capacity, power up and gravity down controls to conserve power with a manual back-up system, handrails, and interlocking seatbelts.

### LIFT DOOR SLIDE-BOLT LOCK

**V FE RE**

Secures the lift door, prevents the door from being opened from the outside when engaged, and prevents engine start when the door is locked.



LIFT DOOR SLIDE-BOLT LOCK



LIFT DOOR LIGHT

### LIFT DOOR LIGHT

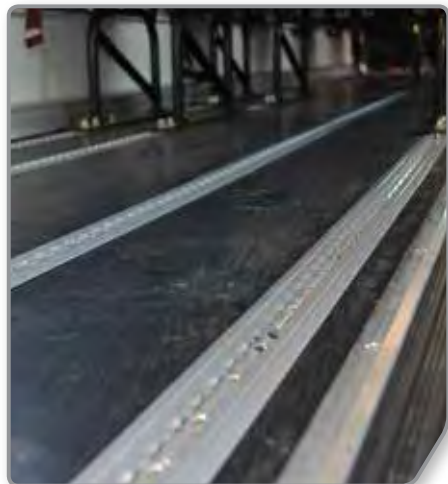
**V FE RE**

Illuminates the lift area with two 5" LED lights.

### FULL LENGTH FLOOR TRACKS

**V FE**

Provides floor tracks that extend the entire length of the passenger compartment, on one or both sides, to allow the flexibility to secure wheelchairs and passenger seats.



FULL LENGTH FLOOR TRACKS



FLOOR TRACKS

### FLOOR TRACKS

**V FE RE**

Provides a floor track for one or two track-mounted seats or one wheelchair position, giving the bus the flexibility to secure passenger seats or wheelchairs.



WHEELCHAIR FLOOR TRACK



WHEELCHAIR TIE DOWN KIT

### WHEELCHAIR FLOOR TRACK

**V FE RE**

Provides a floor track for only 1 wheelchair.

### WHEELCHAIR TIE DOWN KIT

**V FE RE**

Provides retractable system with restraint belts, occupant restraint belts, and a storage pouch.



INTERIOR REARVIEW MIRROR



REMOTE REARVIEW

### INTERIOR REARVIEW MIRROR

**V FE RE**

10" x 30" rearview interior mirror mounted on a heavy-duty bracket.

### REMOTE REARVIEW

**V FE RE**

Provides the driver with a remote control adjustment for the rearview mirror system on the bus.

### HEATED MIRROR

**V FE RE**

Give drivers a clear vision of their surroundings in cold weather with remote-controlled heated mirrors that are available with 15 minute timers to conserve energy.



HEATED MIRROR



STEEL REARVIEW MIRROR MOUNT

### STAINLESS STEEL MOUNT

**V FE RE**

Replaces black powder-coated mirror mounting arms with stainless steel mirror mounting arms.



### SPLIT MIRROR SYSTEM

**V FE RE**

Provides a hand-adjustable or remote-controlled split mirror system. The driver side mirror and passenger side mirror are composed of two independent mirror assemblies, reducing blind spots.



SPLIT MIRROR SYSTEM



ACCUSTYLE MIRROR

### ACCUSTYLE MIRROR

**V FE RE**

Give drivers a clear vision of their surroundings by installing 8" x 17" single head mirrors with a non-detent adjustable high mount on the driver's side.

### STAINLESS STEEL BRACKETS

**V FE RE**

Replaces the black, powder-coated crossview mirror brackets with stainless steel brackets.



STAINLESS STEEL BRACKETS



BELL MOUNT BRACKETS

### BELL MOUNT BRACKETS

**V**

Provides bell mount brackets for the crossview mirror system.

### FRONT MUD FLAPS

**V FE RE**

Rubber flaps located behind the front wheels to reduce water spray and debris from tires.



FRONT MUD FLAPS



FRONT OF REAR MUD FLAPS

### FRONT OF REAR MUD FLAPS

**V FE RE**

Rubber flaps located in front of the rear wheels to reduce water spray from tires.



FULL LENGTH MUD FLAPS



REAR MUD FLAPS WITH LOGO

### FULL LENGTH MUD FLAPS

**FE RE**

Full length rubber flaps located behind the front wheels to reduce water spray and debris from tires.

### REAR MUD FLAPS WITH LOGO

**V FE RE**

Rubber flaps featuring the Blue Bird logo are located behind the rear wheels to reduce water spray and debris from tires.



LUSTERLESS BLACK HOOD



RUBBER FENDER

### LUSTERLESS BLACK HOOD

**V**

Features a hood painted lusterless black with glossy yellow fenders and fender extensions to help the driver see in inclement weather.

### RUBBER FENDER

**V FE RE**

Provides body-mounted, rubber fenders around the front and/or rear wheel opening.

### STEEL WINDOW SCREENS

**V FE RE**

This safety bus option completely covers the exterior of a side window with a 14 gauge window screen that is riveted securely to the bow.



STEEL WINDOW SCREENS



STEEL SECURITY PARTITION

### STEEL SECURITY PARTITION

**V FE RE**

This safety bus option provides an interior security partition constructed with a heavy-duty steel frame and two metal sliding doors.



### METAL EMERGENCY DOOR

**V FE**

Provides a rear metal emergency door without glass openings.



METAL EMERGENCY DOOR



BLIND METAL REAR

### BLIND METAL REAR

**V FE RE**

Provides blind, rear, metal vision panels without windows.

### WINDOW PORTHOLES

**V FE RE**

This safety bus feature provides a 6" high port hole window just below the header line on both sides of the bus.



WINDOW PORTHOLES



SILVER GRILLE

### SILVER GRILLE

**V**

Features the front chassis grille painted metallic silver.

### BLACK CENTER RUBRAILS

**V FE RE**

All rubrails and extensions on the exterior of the unit are painted black in the center of the rubrail.



BLACK CENTER RUBRAILS



BLACK RUBRAILS

### BLACK RUBRAILS

**V FE RE**

All rubrails and extensions on the exterior of the unit are painted the full width in black.



DRIVER'S RADIO SYSTEM



REFLECTIVE BUMPER

### DRIVER'S RADIO SYSTEM

**V FE RE**

Monitor breaking news and alert passengers with Blue Bird's AM/FM/AUX/PA radio.

### REFLECTIVE BUMPER

**V FE RE**

Features reflective vinyl tape installed diagonally on the front and/or rear bumper.



EXTENDED WINDOW RUBRAIL



EXTENDED SEAT RUBRAIL

### EXTENDED WINDOW RUBRAIL

**V FE**

Provides a continuation of the window rubrail around the rear corner panel to the rear emergency door post.

### EXTENDED SEAT RUBRAIL

**V FE**

Provides a continuation of the seat level rubrail, around the rear corner panel to the rear emergency door post.



EQUIPMENT COMPARTMENT



FIRE EXTINGUISHER

### EQUIPMENT COMPARTMENT

**V FE RE**

Provides a locking emergency equipment compartment above the driver with a key lock.

### FIRE EXTINGUISHER

**V FE RE**

Quickly attack a small fire by installing this 5LB, 3A:40BC rated fire extinguisher that includes the gauge and hose.



**WRECKING BAR**
**V FE RE**

Includes a 24" steel wrecking bar that meets CSA 409 20 G specifications.



WRECKING BAR

**WHEEL CHOCK BLOCK**
**V FE RE**

Features a heavy-duty, rubber wheel chock to keep the bus in place while on an incline.



WHEEL CHOCK BLOCK

**FIRE BLANKET**
**V FE RE**

Features an emergency fire blanket that can be used to suppress small fires.



FIRE BLANKET

**SHOULDER CUSHIONS**
**FE RE**

Provides 4" shoulder pads for passenger seating. The pads are mounted below the windows and covered in black Fire-Block upholstery.



SHOULDER CUSHIONS

**STANDEE RAIL**
**V FE RE**

Gives passengers secure stability when standing, inside the bus.



STANDEE RAIL

**MODESTY PANEL**
**V FE RE**

Provides a 21.75" wide, aluminum modesty panel extending to the floor for use with a station and guardrail option. Available on the left or right side of the bus. Also available with barriers.



MODESTY PANEL



MECHANICAL DRIVER'S SEAT



AIR SUSPENSION SEAT

**MECHANICAL DRIVER'S SEAT**
**V FE RE**

Features a mechanical driver's seat that's certified to MVSS 222 school bus seating and crash protection. This mechanical driver's seat has easy to reach adjustments and features optional heated cushions.

**AIR SUSPENSION SEAT**
**V FE RE**

This integrated air suspension driver's seat with 3-point seat belt is certified to MVSS 222 school bus seating and crash protection. The seat has easy to reach adjustments and is available with or without heated cushions.



PADDED STANCHIONS



BARRIER

**PADDED STANCHIONS**
**V FE RE**

This non-school bus option helps prevent stepwell accidents and help passengers board the bus safely with these vertical stanchions and horizontal guardrails covered in black vinyl padding.

**BARRIER**
**V FE RE**

Provides a single padded, high back school bus barrier covered with vinyl upholstery. The barrier is available in 30", 36", 39" or 45" widths.



TRACK-MOUNTED BARRIER



BLUE BIRD ACTIVITY SEAT

**TRACK-MOUNTED BARRIER**
**V FE RE**

Provides a 39" high back, track-mounted, school bus barrier. The track-mounted barrier is also available in 30".

**BLUE BIRD ACTIVITY SEAT**
**V FE RE**

Provides a 36" split back seat for 2 passengers that is seat belt ready.



### HIGH BACK SEAT

**V FE RE**

Provides a high back seat belt ready seat. The back is padded on the rear side, across the top, and down the sides to cushion level. The seat is available in 26", 30", 34", 36", 39" or 45" widths.



HIGH BACK SEAT



HIGH BACK FLIP-UP SEAT

### HIGH BACK FLIP-UP SEAT

**V FE RE**

Provides a 39" wide high back flip seat without seat belts. The normal position of the cushion is flipped up and the seat is gusset-mounted next to the side emergency door. Seats belts are available as an option.

### ACTIVITY BUS SEAT

**V FE RE**

This comfortable slim line seat was designed to ensure passenger safety while allowing the flexibility for transporting kids, teenagers, and adults. It meets FMVSS 222 requirements and provides optimal 3-point belts for increased passenger safety.



ACTIVITY BUS SEAT



QUASI-STATIC SEAT

### QUASI-STATIC SEAT

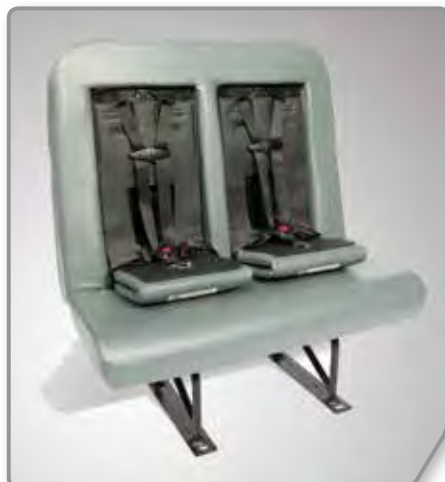
**V FE RE**

The Quasi-Static Seat System with 3 point belts is designed to provide ergonomic comfort and safety with zero loss of occupancy.

### CHILD RESTRAINT SEAT (CRS)

**V FE RE**

Provides a seat with integrated child restraints. The seat allows two positions, each with a fold-down pad built into the seat that gives access to lap and shoulder belts for children. It's available with or without lap belts for adult passengers.



CHILD RESTRAINT SEAT (CRS)



QUASI-STATIC SEAT (CRS)

### QUASI-STATIC SEAT (CRS)

**V FE RE**

The Quasi-Static Seat System, with integrated child restraints, is designed to provide ergonomic comfort and safety with zero loss of occupancy.



CONVERTIBLE SEAT



LATCH SCHOOL BUS SEAT

### CONVERTIBLE SEAT

**V FE RE**

With the convertible seat, a school bus seat can be transformed to any specialty seat and back again with ease.

### LATCH SCHOOL BUS SEAT

**V FE RE**

Provides a 39" wide high back, seat belt ready seat, which is equipped with two positions for the "Lower Anchor and Tether for Children (LATCH)" child seat anchorage location.

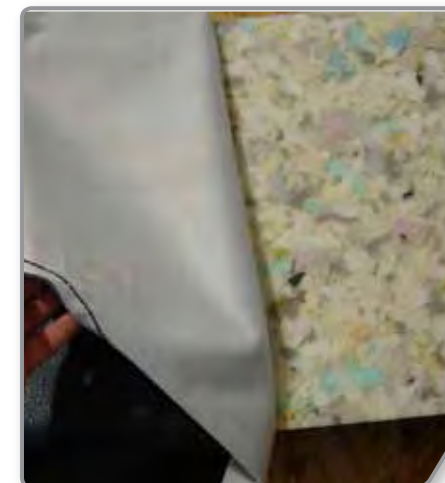
### HINGED SEAT CUSHION

**V FE RE**

The seat cushion is hinged on the front of the seat and tilts forward to provide access to the floor area under the seat. This option is available on 26", 30", 34", 36", and 39" seats.



HINGED SEAT CUSHION



FIRE-BLOCK SEAT

### FIRE-BLOCK SEAT

**V FE RE**

Upholsters all passenger seats with a gray, vinyl fire-block upholstery to further protect the bus and its passengers.

### EXTENDED SIDE PANEL SKIRT

**V FE RE**

Provides 16 gauge outside side panels with a skirt length of 25.75".



EXTENDED SIDE PANEL SKIRT



EXTENDED SIDE PANEL SKIRT

### EXTENDED SIDE PANEL SKIRT

**V**

Provides fluted, 20 gauge outside side panels with a skirt length of 19.75". It includes window line, seat line, floor line, and skirt line rubrails.



**EXTENDED SIDE PANEL SKIRT**
**V FE RE**

Provides 16 gauge outside side panels with a skirt length of 19.75". It includes window line, seat line, floor line, and skirt line rubrails.



EXTENDED SIDE PANEL SKIRT

**HINGED SCHOOL BUS SIGN**
**V FE RE**

Gives the driver the flexibility to indicate that the bus is "out of service" by providing hinged signs in the front and rear that cover 8" school bus lettering.



HINGED SCHOOL BUS SIGN

**MOTORIST ALERT DISPLAY**
**V FE RE**

An electronic, LED display mounted on the rear of the bus alerts motorists behind the bus that it's preparing to stop, boarding or discharging passengers, or backing up.



MOTORIST ALERT DISPLAY

**STEPWELL PROTECTION**
**FE RE**

Reduce damage to the lower front portion of the entrance door stepwell with this skid plate.



STEPWELL PROTECTION

**STAINLESS STEEL STEPWELL**
**V FE RE**

Provides a heavy-duty, corrosion-resistant, stainless steel entrance door stepwell.



STAINLESS STEEL STEPWELL

**YELLOW NOSED STEP-TREADS**
**V FE RE**

Provides entrance door step-treads that match the floorcovering color and have yellow rubber nosing.



YELLOW NOSED STEP-TREADS



WHITE NOSED STEP-TREADS



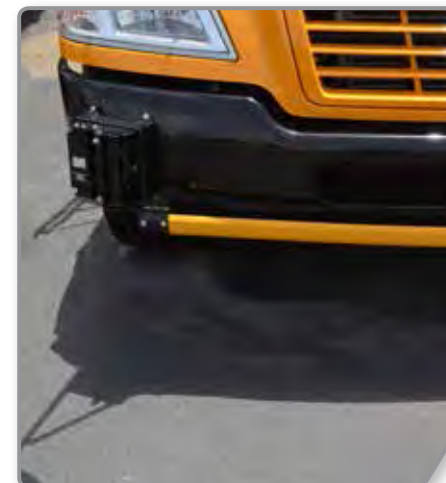
STUDDED STEP-TREAD

**WHITE NOSED STEP-TREADS**
**V FE RE**

Provides entrance door step-treads that match the floorcovering color and have white rubber nosing.

**STUDDED STEP-TREAD**
**V FE RE**

Give passengers more stable footing by providing step-treads with black or gray, rubber studs.



AIR CROSSING ARM



ELECTRIC CROSSING ARM

**AIR CROSSING ARM**
**V FE RE**

Easily directs the traffic-flow of pedestrians away from the front bumper with an air-activated, polycarbonate crossing arm that is activated simultaneously with the stop arm.

**ELECTRIC CROSSING ARM**
**V FE RE**

Easily directs the traffic-flow of pedestrians away from the front bumper with an electric-activated, polycarbonate crossing arm that is activated simultaneously with the stop arm.



ELECTRICSTOPARM,LEDCLUSTER



ELECTRICSTOPARM,LEDSTROBE

**ELECTRIC STOP ARM, LED CLUSTER**
**V FE RE**

Provides electric-operated stop arm that have red, LED cluster lights over and under the word "stop" on both sides.

**ELECTRIC STOP ARM, LED STROBE**
**V FE RE**

Provides electric-operated stop arm that have red, LED strobe lights over and under the word "stop" on both sides.



**AIR STOP ARM, LED CLUSTER**
**V FE RE**

Provides air-operated stop arm that have red, LED cluster lights over and under the word "stop" on both sides.



AIR STOP ARM, LED CLUSTER



AIR STOP ARM, LED STROBE

**AIR STOP ARM, LED STROBE**
**V FE RE**

Provides air-operated stop arm that have red, LED strobe lights over and under the word "stop" on both sides.

**LED STOP ARM**
**V FE RE**

Provides air or electric-operated stop arm with a LED illuminated "STOP" wording.



LED STOP ARM

**DRIVER'S SUN VISOR**
**V FE RE**

Reduces the sun glare with a transparent, dark-tinted visor installed above the driver's window.



DRIVER'S SUN VISOR

**EMERGENCY ROOF HATCH**
**V FE RE**

The roof vents are 23" x 23" hatches that are available with alarm, power fans, and inner and outer release handles.



EMERGENCY ROOF HATCH

**SLEEPING CHILD MONITOR**
**V FE RE**

The sleeping child monitor requires the driver to walk to the rear of the bus to check for sleeping or hiding children before exiting the bus.



SLEEPING CHILD MONITOR



LED WARNING LIGHTS



WARNING LIGHT HIGHLIGHT

**LED WARNING LIGHTS**
**V FE RE**

Provides LED warning lights in an 8 light system. The lights have 7" round lenses with one amber and one red on each side in the front and rear. For a strobe affect, order wiring feature 30316-06.

**WARNING LIGHT HIGHLIGHT**
**V FE RE**

Highlights the warning lights with a 2" black band painted around the front and rear warning lights.

**HOODLESS WARNING LIGHTS**
**V FE RE**

Provides warning lights without hoods on the front and rear roof caps.



HOODLESS WARNING LIGHTS



SPLIT-SASH WINDOW STOP

**SPLIT-SASH WINDOW STOP**
**V FE RE**

This option provides two stoppers (one on each side) to limit window travel from 3.5" up to 9" openings.

**TINTED REAR WINDOW**
**V FE RE**

Provides dark-tinted, tempered or dark-tinted, laminated glass in the rear emergency window that allows 30% light transmission.



TINTED REAR WINDOW (TEMPERED)



QUICK-PUSH EMERGENCY EXIT

**QUICK-PUSH EMERGENCY**
**V FE RE**

Install our 12" clear, tempered, split-sash windows with a warning buzzer to ensure reliable emergency egress exits for passengers.



### TRANSIT SLIDING WINDOWS

**V FE RE**

Provides rectangular, full-sliding, transit style windows for the full length of the bus body on both sides.



TRANSIT SLIDING WINDOWS

### EASY-SLIDE DRIVER WINDOW

**V FE RE**

Provides a double sliding, split-sash driver window with clear or light tinted glass in tempered or double-layered laminated glass and an aluminum finish.



EASY-SLIDE DRIVER WINDOW

### E-Z WINDOW

**V FE RE**

Provides a 12" tinted, tempered, split-sash window with black or aluminum frames.



SPLIT-SASH WINDOW

### GRIP HANDLES

**V FE RE**

Helps operators to safely clean the windshield by installing grip handles.



GRIP HANDLES

### FOLDING STEPS

**V**

This option adds folding steps near the front of the bus for easier access to the windshield.



FOLDING STEPS

### 18" WIPER BLADES

**V**

The All-Weather Wiper Blades are engineered to last longer and endure through all-weather conditions.



18" WIPER BLADES



26" WIPER BLADES



LEECE-NEVILLE ALTERNATOR

### 26" WIPER BLADES

**FE RE**

The All-Weather Wiper Blades are engineered to last longer and endure through all-weather conditions.

### 270 AMP ALTERNATOR

**V FE RE**

This 270 amp alternator ensures batteries are charged to provide sufficient electrical power.



KNEELING SYSTEM



SPRING SUSPENSION SYSTEM

### KNEELING SYSTEM

**FE RE**

The kneeling system lowers the bus to curb level for boarding passengers to enter safely and easily.

### SPRING SUSPENSION SYSTEM

**V FE RE**

Provides a spring suspension system that defines the interface between the front, steering axle, and chassis frame rails.



AIR SUSPENSION SYSTEM



HEAVY-DUTY REAR AXLES

### AIR SUSPENSION SYSTEM

**V FE RE**

Provides a comfort air spring suspension system that offers an improved ride and a more tolerant frame to body connection. It defines the interface between the front, steering axle, and chassis frame rails.

### HEAVY-DUTY REAR AXLES

**V FE RE**

Designed to deliver maximum performance and durability. The axles include seals that keep lubricating oil in and debris out, and it has involute splines on the drive pinion and axle shafts to increase torque capacity.



## PARKING BRAKE COVER

**V FE RE**

Reduces driver's hand and wrist discomfort with a neoprene rubber cover that slips easily over the park brake valve.

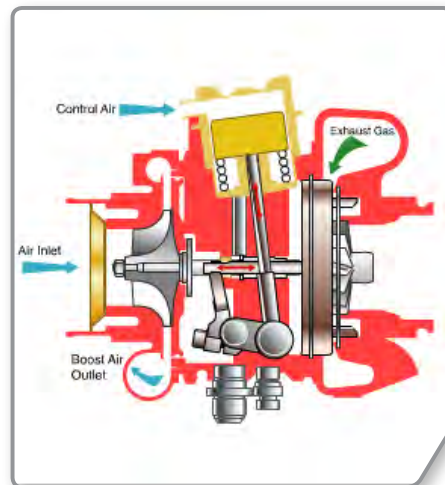


PARKING BRAKE COVER

## TURBO EXHAUST BRAKE

**V FE RE**

Provides a variable geometry turbo brake that is easily engaged by a dash switch.



TURBO EXHAUST BRAKE SYSTEM

## AIR DRUM BRAKES

**V FE RE**

Compared to hydraulic brakes, air drum brakes have longer lasting linings, longer brake life, a shorter stopping distance, and increased bus downtime.



AIR DRUM BRAKES

## BRAKE ROTORS

**V FE**

Reduce brake rotor maintenance costs with high-performance hydraulic brake rotors that are built with an isolated precision tone ring, eliminating ABS failure caused by corrosion of the tone ring.



HYDRAULIC BRAKE ROTORS

## AIR DISC BRAKES

**V FE RE**

Air disc brakes provide surer, safer stops, require less maintenance, deliver longer pad and rotor life, and cut service time in half – all of which adds up to less bus downtime, and lowers your total cost of ownership.



AIR DISC BRAKES

## AIR TANK DRAIN VALVES

**V FE RE**

Create easy access and shorten service time with remote-mounted manual air tank drain valves.



MANUAL AIR TANK DRAIN VALVE



AIR DRYER



ADJUSTABLE PEDALS

## AIR DRYER

**V FE RE**

The AD-9, AD-SP, AD-IP air dryers have an integral-purge design and a premium removable desiccant alloy filter that efficiently removes moisture and contaminants from the air brake system.

## ADJUSTABLE PEDALS

**V FE RE**

Adjustable pedals designed to enable the repositioning of the brake and accelerator pedals, bringing them closer to the driver. This results in improved ergonomics in relation to the steering wheel for taller and shorter drivers.



ELECTRIC STABILITY CONTROL



TRACTION CONTROL SYSTEM

## ELECTRIC STABILITY CONTROL

**V FE RE**

Bendix® ESC continuously monitors a variety of vehicle parameters and sensors so that when a difficult driving situation develops (example: icy road conditions), the system will quickly and automatically intervene to assist the driver. Expected availability Spring 2015.

## TRACTION CONTROL SYSTEM

**V FE RE**

Automatic traction control monitors wheel speed using ABS wheel speed sensors. If a wheel is slipping, traction control reduces engine power to help the wheel regain traction. If necessary, traction control can also apply the brakes to the slipping wheel.

## SILICONE COOLANT HOSE

**V FE RE**

The heavy-duty silicone coolant hose ensures better durability versus standard rubber versions and meets SAE, J20R4, or J20R5 specifications. Silicone is highly resistant to weathering, coolant deterioration and temperature extremes.



SILICONE COOLANT HOSE



ANTIFREEZE FILTER

## ANTIFREEZE FILTER

**V FE RE**

Provides a remote-mounted engine coolant filter that eliminates contaminants from the antifreeze.



**FLEETGUARD ANTIFREEZE**
**V FE RE**

Fleetcool EX is a fully formulated, phosphate-free, extended life coolant that protects against internal corrosion of the cooling system and reduces labor and material maintenance costs with longer service intervals.


**FLEETGUARD ANTIFREEZE**

**EASY-SWING RADIATOR**
**EASY-SWING RADIATOR**
**FE**

The swing-out radiator and air cooler package swings out 45 degrees to create easy access to the engine fan belt and alternator.

**RADIATOR SHUTTERS**
**V FE RE**

The air-actuated shutters block air flow through the radiator and charge the air cooler to help accelerate engine warm-up in cold weather.


**RADIATOR SHUTTERS**

**RADIATOR COVER**
**RADIATOR COVER**
**V FE**

Obtain optimal engine performance in cold or subzero weather by installing the radiator grill cover that maintains engine operating temperatures.

**BELT GUARD**
**RE**

Provides a guard at the rear of the engine to prevent objects from getting caught in the belt while it's moving.


**BELT GUARD**
**5 MINUTE ENGINE SHUT-DOWN**
**V FE RE**

Automatically prevent fuel waste by equipping this engine program option that shuts down the engine if it remains idle for 5 minutes. Includes a flashing alarm light.


**5 MINUTE ENGINE SHUT-DOWN**

**ENGINE BLOCK HEATER**

**CUMMINS DIESEL ENGINE**
**ENGINE BLOCK HEATER**
**V FE RE**

Accelerate your engine's warm-up time by installing an Internal Engine Block Heater (Coolant Immersion Type).

**CUMMINS DIESEL ENGINE**
**V FE RE**

Cummins is the name when it comes to reliable and powerful fuel efficient diesel engines. This ISB13 6.7 L turbo diesel engine has peak power of 300 HP. Ask your Blue Bird Representative which engine best fits your needs.


**CUMMINS DIESEL ENGINE**

**CUMMINS CNG ENGINE**
**CUMMINS DIESEL ENGINE**
**RE**

Cummins is the name when it comes to reliable and powerful fuel efficient diesel engines. This ISL13 8.9 L turbo diesel engine has peak power of 300 HP. Ask your Blue Bird Representative which engine best fits your needs.

**CUMMINS CNG ENGINE**
**RE**

Cummins is the name when it comes to reliable and powerful fuel efficient natural gas engines. This ISL-G compressed natural gas engine has peak power of 280 HP. Ask your Blue Bird Representative which engine best fits your needs.

**FORD PROPANE ENGINE**
**V**

Ford and ROUSH CleanTech deliver the best propane autogas school buses in the industry. The Vision's Ford three-valve 6.8L V10 engine delivers 362 horsepower and 457 lb-ft of torque.


**FORD PROPANE ENGINE**

**ALLISON TRANSMISSION**
**ALLISON TRANSMISSION**
**V FE RE**

The Allison automatic transmissions provide extra fuel efficiency and smooth shifting. Ask your Blue Bird Representative which automatic transmission best fits your powertrain needs.



### EXHAUST PIPE SYSTEMS

**V FE RE**

Protect the tailpipe from damage due to road or parking obstacles by routing it through the rear bumper.



EXHAUST PIPE SYSTEMS



EXHAUST PIPE SYSTEMS

### EXHAUST PIPE SYSTEMS

**V FE RE**

Optional tailpipe routing under the rear bumper when the standard side exhaust is not suitable.

### FUEL/WATER SEPARATOR

**V FE RE**

Ensures that fuel is clean and eases fuel/water separator servicing with an electric fuel priming pump.



FUEL/WATER SEPARATOR



100 GALLON FUEL SYSTEM

### 100 GALLON FUEL SYSTEM

**V FE RE**

Allows a diesel bus to drive longer on the road without having to refill as often.

### CNG FUEL SYSTEM

**RE**

Blue Bird's Compressed Natural Gas fuel system will provide you with efficient fuel usage and reduced emissions, and the fuel cylinders have a 20 year lifetime.



CNG FUEL SYSTEM



PROPANE AUTOGAS SYSTEM

### PROPANE AUTOGAS SYSTEM

**V**

Blue Bird's Propane System, a clean fuel, will provide you with lower fuel costs and associated carbon footprint. Features a 70-gallon tank.



PROPANE AUTOGAS SYSTEM



AIR HORN

### EXTENDED RANGE PROPANE

**V**

Blue Bird's Propane System, a clean fuel, will provide you with lower fuel costs and associated carbon footprint. Features a 100 gallon tank.

### ROOF AIR HORN

**V**

Be heard with a roof-mounted air horn in addition to the electric horn mounted under the hood.



BACK UP HORN



HANKOOK TIRES (255/70R22.5)

### BACK UP HORN

**V FE RE**

Ensures the safety of all bystanders by providing a backing safety horn that's activated when the bus is in reverse.

### HANKOOK TIRES (255/70R22.5)

**V FE RE**

The AH12 Hankook Tires provide solid traction, optimized fuel efficiency, and have a computer-designed tread pattern for even wear and longer tire life.

### HANKOOK TIRES (11R22.5)

**V FE RE**

Features AH12 front tires and Z35A rear tires. The Z35A drive tire has an extra-rugged tread with a special long-wearing compound that resists cuts and abrasions and ensures outstanding traction and braking in all-weather conditions.

### HUBODOMETER

**V FE RE**

Accurately measures distance traveled with an exterior hubodometer that is mounted on the right side drive axle hub.



HANKOOK TIRES (11R22.5)



HUBODOMETER



### ONSPOT TIRE CHAINS

#### V FE RE

The Onspot Automatic Tire Chain provides a single set of conventional snow chains that can be activated at the flip of a switch inside the driver's cab, without having to stop the bus to install.



ONSPOT TIRE CHAINS

### EASY ACCESS TIRE CARRIER

#### V FE

Provides easy access to lower the spare tire located on the left hand side of the frame rail.



EASY ACCESS TIRE CARRIER

### ALUMINUM WHEELS

#### V FE RE

Eliminate unsightly rust and increase fuel economy by installing Blue Bird's 7.5" x 22.5" or 8.25" x 22.5" Aluminum Wheels.



ALUMINUM WHEELS

### HEAVY DUTY TOW HOOKS

#### V FE RE

Provides two tow hooks with heavy-duty frame mounting to provide the proper recovery. The tow hooks are available on the front or rear.



HEAVY DUTY TOW HOOKS

### WHEEL COVERS

#### V FE RE

Maintain that new bus look by installing these stainless steel wheel covers to provide an extra, polished shine.



WHEEL COVERS

### LOCKING FUEL TANK DOOR

#### V FE RE

Prevent fuel theft with this secured, key-locking fuel tank door.



LOCKING FUEL TANK DOOR

## The Blue Bird Body Company Promise



We are singularly focused on building and selling school buses that customers want and value. The safety of school children is at the center of all that we do and we will strive every day, just as we have since our beginning in 1927, to provide an unparalleled and affordable product in terms of safety, quality, durability, and serviceability.

We will be easy to do business with, responsive to our customers' wants and needs, and provide prompt after-sale support in parts and service through a professional, highly-qualified distribution network. Customer satisfaction is our top priority.



**OUR BLUE BIRD FAMILY  
FORT VALLEY, GEORGIA**



# Index

100 GALLON FUEL SYSTEM	31	ALUMINUM WHEELS	33
18" WIPER BLADES	25	ANTIFREEZE FILTER	28
26" WIPER BLADES	26	BACK UP HORN	32
28" EMERGENCY DOOR	6	BARRIER	18
35" EMERGENCY DOOR	6	BATTERY ROLLER TRAY	5
4" LED BACK-UP LIGHT	3	BELL MOUNT BRACKETS	13
5 MINUTE ENGINE SHUT-DOWN	29	BELT GUARD	29
6” DRIVER AUXILIARY FAN	8	BLACK CENTER RUBRAILS	15
ACCUSTYLE MIRROR	13	BLACK RUBRAILS	15
ACOUSTIC PANELS	10	BLIND METAL REAR	15
ACTIVITY BUS SEAT	19	BLUE BIRD ACTIVITY SEAT	18
ADJUSTABLE PEDALS	28	BLUE BIRD CONNECT™	1
AIR CONDITIONING SYSTEM	2	BLUE BIRD E-Z WINDOWS™	25
AIR CROSSING ARM	22	BODY INSULATION	10
AIR DEFLECTOR	5	BRAUN'S NL919FIB-2 LIFT	11
AIR DISC BRAKES	27	CHILD RESTRAINT SEAT (CRS)	19
AIR DRUM BRAKES	27	CHROME DOOR CONTROL	7
AIR DRYER	28	CNG FUEL SYSTEM	31
AIR HORN	32	CONNECT BARCODE READER	1
AIR STOP ARM, LED CLUSTER	23	CONNECT DISTRESS BUTTON	1
AIR STOP ARM, LED STROBE	23	CONNECT DRIVER'S KEYPAD	1
AIR SUSPENSION SEAT	18	CONNECT DRIVER'S TABLET	1
AIR SUSPENSION SYSTEM	26	CONNECT RFID CARD READER	1
AIR-OPERATED DOORS	6	CONVECTION HEATING	9
ALLISON TRANSMISSION	30	CONVERTIBLE SEAT	20

# Index

CUMMINS CNG ENGINE	30	ENTRANCE STEP DE-ICER	9
CUMMINS DIESEL ENGINE	30	EQUIPMENT COMPARTMENT	16
CUMMINS DIESEL ENGINE	30	ESPAR AUXILIARY HEATER	9
DOUBLE LUGGAGE	4	EXHAUST PIPE SYSTEMS	31
DRIVER CUP HOLDER	7	EXHAUST PIPE SYSTEMS	31
DRIVER PADDED ARMREST	8	EXTENDED SEAT RUBRAIL	16
DRIVER'S DOCUMENT POUCH	4	EXTENDED SIDE PANEL SKIRT	20
DRIVER'S RADIO SYSTEM	16	EXTENDED SIDE PANEL SKIRT	21
DRIVER'S SUN VISOR	23	EXTENDED SIDE PANEL SKIRT	20
DRIVER'S TRASH CAN	8	EXTENDED WINDOW RUBRAIL	16
EASY ACCESS TIRE CARRIER	33	FENDER DIRECTIONAL LIGHTS	2
EASY-SLIDE DRIVER WINDOW	25	FIRE BLANKET	17
EASY-SWING RADIATOR	29	FIRE EXTINGUISHER	16
ELECTRIC CROSSING ARM	22	FIRE-BLOCK SEAT	20
ELECTRIC STABILITY CONTROL	28	FLAT FLOOR	5
ELECTRIC STOP ARM, CLUSTER	22	FLEETGUARD ANTIFREEZE	29
ELECTRIC STOP ARM, STROBE	22	FLOOR TRACKS	11
ELECTRICAL ACCESS LOCK	2	FLOOR-MOUNTED HEATER	10
ELECTRIC-OPERATED DOORS	6	FOLDING STEPS	25
EMERGENCY DOOR GLASS	7	FORD PROPANE ENGINE	30
EMERGENCY ROOF HATCH	23	FRONT MUD FLAPS	13
ENGINE BLOCK HEATER	30	FRONT OF REAR MUD FLAPS	13
ENTRANCE DOOR GLASS	7	FRONT STEPWELL HEATER	9
ENTRANCE DOOR LOCK	7	FUEL/WATER SEPARATOR	31
ENTRANCE DOOR RELEASE	5	FULL LENGTH FLOOR TRACKS	11



# Index

FULL LENGTH MUD FLAPS	14	LEFT HAND ENTRANCE DOOR	7
GRIP HANDLES	25	LIFT DOOR (44.5" W X 69" H)	10
HANKOOK TIRES (11R22.5)	32	LIFT DOOR (45" W X 58" H)	10
HANKOOK TIRES (255/70R22.5)	32	LIFT DOOR LIGHT	11
HEATED MIRROR	12	LIFT DOOR SLIDE-BOLT LOCK	11
HEAVY DUTY TOW HOOKS	33	LOADING SPOTLIGHTS	3
HEAVY-DUTY REAR AXLES	26	LOCKABLE DASH GLOVE BOX	4
HIGH BACK FLIP-UP SEAT	19	LOCKING FUEL TANK DOOR	33
HIGH BACK SEAT	19	LUSTERLESS BLACK HOOD	14
HINGED SCHOOL BUS SIGN	21	MANUAL AIR TANK DRAIN VALVE	27
HINGED SEAT CUSHION	20	MECHANICAL DRIVER'S SEAT	18
HOODLESS WARNING LIGHTS	24	METAL EMERGENCY DOOR	15
HUBODOMETER	32	MODESTY PANEL	17
HYDRAULIC BRAKE ROTORS	27	MOTORIST ALERT DISPLAY	21
INTERIOR REARVIEW MIRROR	12	ONSPOT TIRE CHAINS	33
KNEELING SYSTEM	26	OVERHEAD STORAGE	4
LATCH SCHOOL BUS SEAT	20	PADDED STANCHIONS	18
LED DIRECTIONAL LIGHTS	2	PARKING BRAKE COVER	27
LED INTERIOR DOME LIGHTS	2	PASS-THRU LUGGAGE	4
LED LIFT BOARDING LIGHT	3	PLYWOOD FLOOR	8
LED STEPWELL LIGHT	3	PROPANE AUTOGAS SYSTEM	31
LED STOP ARM	23	PROPANE AUTOGAS SYSTEM	32
LED TAIL LIGHT	2	QUASI-STATIC SEAT	19
LED WARNING LIGHTS	24	QUASI-STATIC SEAT (CRS)	19
LEECE-NEVILLE ALTERNATOR	26	QUICK-PUSH EMERGENCY EXIT	24

# Index

RADIATOR COVER	29	STAINLESS STEEL STEPWELL	21
RADIATOR SHUTTERS	29	STANDEE RAIL	17
REAR EMERGENCY DOOR LOCK	5	STEEL REARVIEW MIRROR MOUNT	12
REAR HEATER	9	STEEL SECURITY PARTITION	14
REAR MUD FLAPS WITH LOGO	14	STEEL WINDOW SCREENS	14
REFLECTIVE BUMPER	16	STEPWELL PROTECTION	21
RELOCATED RELEASE	6	STUDDERED STEP-TREAD	22
REMOTE REARVIEW	12	TINTED REAR WINDOW (TEMP)	24
RICON K5511 LIFT	10	TOOL COMPARTMENT	4
RICON S5510-ADA/403 LIFT	11	TRACK-MOUNTED BARRIER	18
ROOF STROBE LIGHT	3	TRACTION CONTROL SYSTEM	28
RUBBER FENDER	14	TRANSIT SLIDING WINDOWS	25
SCHOOL ACTIVITY BUS (MFSAB)	5	TURBO EXHAUST BRAKE SYSTEM	27
SHOULDER CUSHIONS	17	WARNING LIGHT HIGHLIGHT	24
SIDE EMERGENCY DOOR LOCK	6	WEBASTO AUXILIARY HEATER	8
SILICONE COOLANT HOSE	28	WHEEL CHOCK BLOCK	17
SILICONE HEATER HOSES	9	WHEEL COVERS	33
SILVER GRILLE	15	WHEELCHAIR FLOOR TRACK	12
SINGLE LUGGAGE	3	WHEELCHAIR TIE DOWN KIT	12
SLEEPING CHILD MONITOR	23	WHITE NOSED STEP-TREADS	22
SPLIT MIRROR SYSTEM	13	WINDOW PORTHOLES	15
SPLIT-SASH WINDOW STOP	24	WRECKING BAR	17
SPRING SUSPENSION SYSTEM	26	YELLOW NOSED STEP-TREADS	21
STAINLESS STEEL BRACKETS	13		
STAINLESS STEEL FLOOR TRIM	8		