

# BLUE BIRD ALL AMERICAN



BLUE BIRD®





**BLUE BIRD®**

# BUILT TO TAKE ON TOMORROW.



Each day, more than 550,000 school buses transport 26 million school children to and from school. At Blue Bird, we understand the massive responsibility of this task—on a daily basis we, along with the bus operator, are responsible for the **safety of our future generations**.

The application of the school bus has changed significantly over time—beginning as a way for children in rural areas to travel to school, then as a way to enable equal access to education, and now as a solution to road congestion and green transportation. For over 90 years, Blue Bird has prioritized unparalleled safety at the forefront of our bus designs, while also **lowering the total cost of ownership for our customers**, allowing them to put money back into the classroom.

## DIESEL

*Available for All American FE and RE Models*



As a leader in transport, the **Blue Bird All American** is stellar at navigating in densely populated areas and along highly-trafficked, tight and twisty routes with its **best-in-class turning radius**. Both FE & RE models feature easily accessible engine compartments without the need for special tools, thus increasing uptime and reducing maintenance time. High capacity could result in requiring fewer buses, thus reducing costs further.

## CNG

*Available for All American RE Models*



Go green with the All American RE powered by **clean, affordable and domestically-sourced Compressed Natural Gas (CNG)**. As an extension of Blue Bird's commitment to providing a full-line of affordable green solutions, this bus provides the same great features offered on Blue Bird All American buses while reducing emissions and creating a healthier environment for the community it serves.

# Building a **BETTER BUS**



**BLUE BIRD**  
NEXTGEN SEAT

## Convertible seating has never been this easy - or this comfortable.

Now there is no need to completely remove the entire seat when you want to change the seating configuration. With Blue Bird's NextGen Seat, simply remove four bolts from the base of the seat cushion and reinstall the new seat that you want - it's really that simple! Mix-and-match your seats as you need them, making your bus fleet more versatile without the need to spend large amounts of time or money.



**Lap Belt Ready  
(LBR)**



### COMFORTABLE

The recessed back pad gives passengers improved knee clearance, and the integrated head rest and built-in lumbar support sets a new standard in student seating comfort.



**3-Point Belts  
(3PT)**



**Child Restraint  
(CR)**



### INNOVATIVE

A first in the Industry, the bottom cushion tilts up allowing for unprecedented access between seats as well as ease of cleaning.



### CONVERTIBLE

Easily converts from one seat type to another by simply removing and reinstalling 4 bolts. Available in lap-belt ready, 3-point seat belt, child restraint and 3-point child restraint.



**BLUE BIRD**  
AIR CONDITIONING

## Avoid the hassles of aftermarket installation.

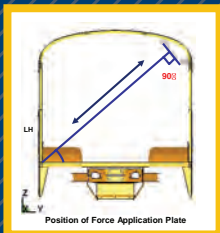
Aftermarket installation can interfere with the structural design of the bus body, as well as put additional stress on critical engine, chassis and electrical systems. This OEM installation creates less maintenance for you, due to the frame-mount installation of the condensers during chassis assembly, EZ clip connectors which provide a no-leak hose to connector securement, and more. Contact your local dealer today to learn more about Blue Bird's OEM air conditioning option!





# #1 Priority SAFETY

At Blue Bird, added safety is not an option. It is a standard. We take no shortcuts because at the end of the day, your children's safety is our business. This core value was at the forefront when we redesigned the new All American. From our own set standards for test compliance, to our best-in-class cockpit visibility, the highest level of safety is engineered into every Blue Bird bus and is at the foundation of everything we do.



## Standard Test Compliance

The All American passes Colorado Rack, Kentucky Pole and Altoona Tests in its standard configuration, not as an option like the competition, highlighting the strength of the core bus design.



## Passenger Safety Cage

Blue Bird's custom designed one-piece roof bow system ensures safe student transportation with an exceptionally strong structure. This safety cage is the backbone of our solid bus design.



## Fuel Tank Between Frame Rails

All fuel tanks are strategically mounted between the frame rails for combined safety and durability. This also helps improve the traction of the drive axle.



## Rub Rail Protection

The top 3 rub rails are fully mounted above the floor level, providing additional structural rigidity and protection for passengers.



## Emissions Reductions

Blue Bird's All American buses meet current EPA and CARB emissions standards, ensuring these buses produce cleaner emissions.



## Best-In-Class Turning Radius

Superior maneuverability limits the infringement on surrounding lanes of traffic when turning corners, and it also virtually eliminates the need to back up the bus in tight cul-de-sacs.



## Exceptional Driver Visibility

The All American provides exceptional forward visibility and unique mirror systems that improve driver awareness and increase the safety of children around the bus.



## Enhanced Defrost Air Flow

This feature is engineered to keep the higher section of the windshield clean for increased visibility in inclement weather.



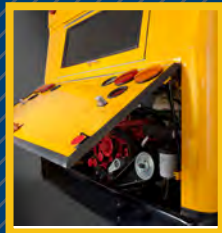
# Intuitive SERVICEABILITY

The Blue Bird All American was designed with ease of serviceability in mind. The All American improves a service technician's accessibility and speed for performing routine maintenance and repairs. Blue Bird also took it a step further by designing our All American and Vision buses to include parts commonality. All of these combined variables further reduce your total cost of ownership. Top it off with Blue Bird's superior technical training programs, and you have a winning combination.



## Enhanced Front Service Door

The forward engine grille panel can be removed without tools for easier maintenance and service access.



## Enhanced Rear Service Door

Specifically designed to provide an easier open and close experience, the RE service door now has hinges located at the top of the door.



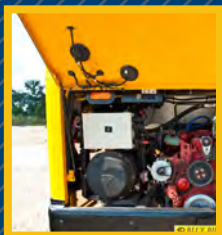
## All American Body Electrical

Body electrical wires are color and continuously number coded for ease of service.



## Spacious Engine Compartment

Intuitive routing of exhaust and cooling system components, with increased engine compartment space, allows for easy access to perform engine maintenance.



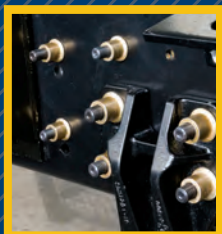
## Chassis Electrical

Powertrain fuses and relays are easy to access, and are housed in a weather-proof "power distribution" terminal.



## Proven Body Design

The Blue Bird All American has parts commonality with the Blue Bird Vision, resulting in a reduction in parts and service complexity.



## Zero-Maintenance Fasteners

Blue Bird's Huck-Spin® fasteners will never require re-torquing throughout the life of the vehicle. This is just one more way Blue Bird helps reduce standard maintenance.



## Industry's Largest DEF Tank

Our standard 15-gallon diesel exhaust fluid (DEF) tank is the industry's largest DEF tank offered. Refills are strategically timed with regular inspection intervals.



## Factory Trained Technicians

Blue Bird maintains a tradition of leading the school bus industry in both quantity and quality of technical training offered to our customers.



## Expansive Dealer & Service Network

Over 335 dealerships and affiliated vehicle service centers are available throughout North America.



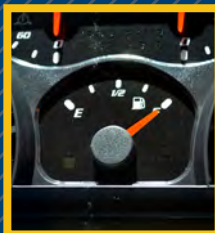
# Dedication to **QUALITY & DURABILITY**

At Blue Bird, quality and durability have always been of paramount importance. That is why over 180,000 of the buses that we've manufactured since our founding in 1927 are still on the road. We pay attention to the details that deliver performance, continually exploring how a product can be improved. It's part of Blue Bird's continuous improvement culture. And it's this steadfast culture that delivers the innovation and robust design featured on the All American.



## **Ergonomic Driver's Cockpit**

The cockpit has been designed to comfortably fit virtually any body size. The cockpit instrument panel is redesigned to match the Blue Bird All American for seamless driver transition.



## **Most Fuel Efficient Engines**

Blue Bird strives to help fleets save money with the industry's most fuel efficient and EPA compliant engines from Cummins.



## **Large Entrance Door**

With today's students transporting larger backpacks, sports equipment and musical instruments, the wider entrance door better accommodates bulky items than the previous model.



## **Robust Steel Bumpers**

Our bumpers are made of 100% steel, offering additional protection and safety to your All American school bus.



## **Improved Window Seals**

Our Blue Bird E-Z windows feature a redesigned top seal, with a felt seal on the upper and lower sash, and an enhanced lock rail. This new design allows for ultra-smooth operation.



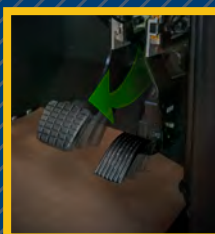
## **Highest Standard Alternator Output**

Our 240-amp alternator is the highest amp alternator offered as standard equipment on a school bus, providing additional capacity to power electrical components and accessories.



## **Tilt/Telescoping Steering Column**

Easily adjustable tilt/telescoping steering column improves driver ergonomics and accessibility



## **Optional Adjustable Pedals**

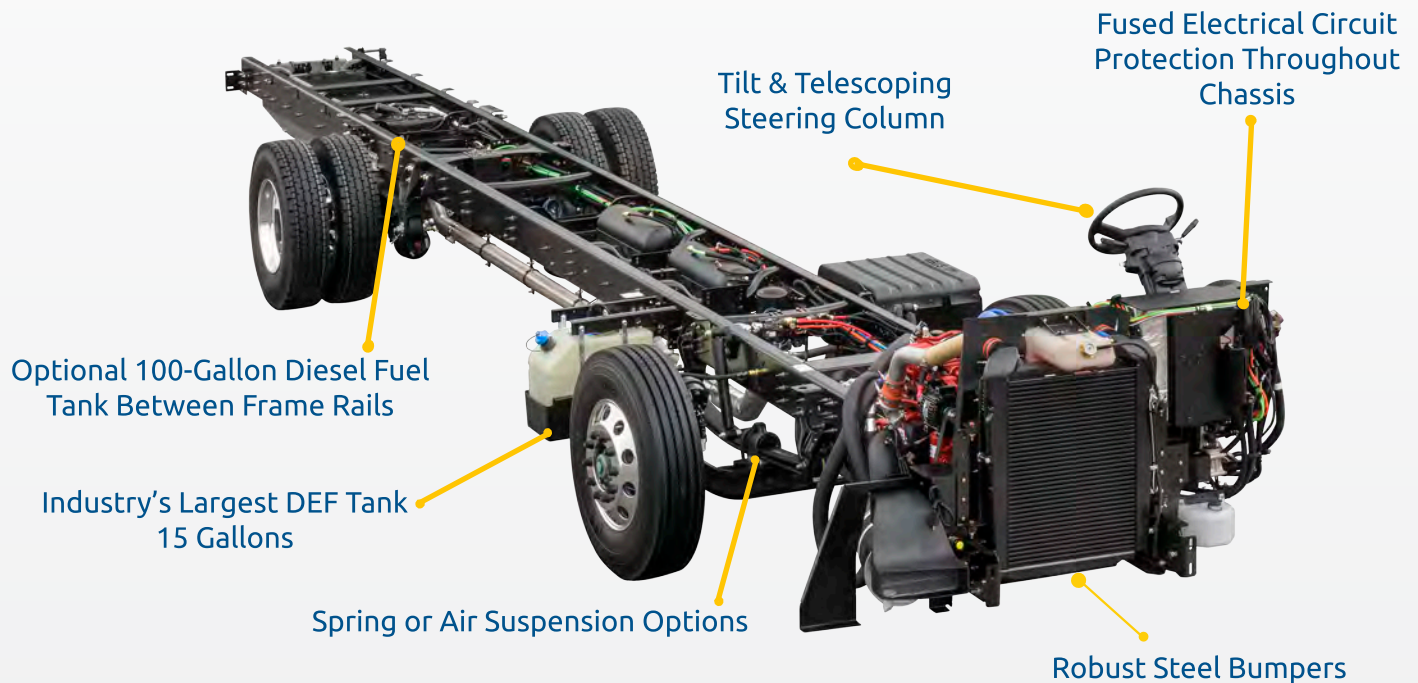
Adjustable pedals enable bus drivers to modify the orientation of the controls to fit their unique body sizes, ensuring an individualized fit that is optimal for the driver.



## Exclusive Purpose-Built Chassis

Blue Bird's exclusive purpose-built chassis, specifically designed for bus applications, blends over 90 years of our finest innovation with unmatched value. From our fuel tank, which is strategically mounted between the frame rails, to our enhanced overall serviceability and student capacity, our purpose-built chassis is a hallmark of our commitment to deliver the industry's most durable buses.

## FORWARD ENGINE ALL AMERICAN CHASSIS



## REAR ENGINE ALL AMERICAN CHASSIS





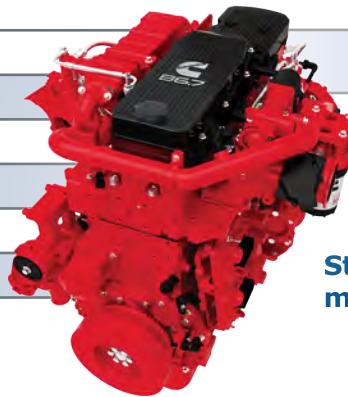
Durable

# ENGINE & TRANSMISSION OPTIONS

## CUMMINS ENGINES

Blue Bird works closely with Cummins, the industry-leading diesel engine manufacturer, to develop engine and driveline configurations specifically designed for our Blue Bird school buses. Cummins diesel and CNG engines deliver the best combination of horsepower, torque, reliability, durability and fuel economy while meeting the latest emission standards.

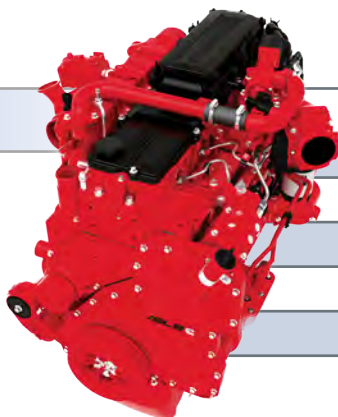
<b>Horsepower</b>	200-300 hp
<b>Peak Torque</b>	520-660 lb-ft
<b>Governed Speed</b>	2600 rpm
<b>Number of Cylinders</b>	6
<b>System Weight</b>	1,150 lbs
<b>Aftertreatment System</b>	145 lbs



**Cummins B6.7**

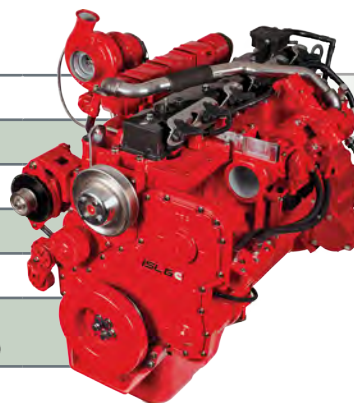
**Standard 5-year, 100,000-mile coverage by Cummins.**

**Cummins L9**



<b>Horsepower</b>	260-300 hp
<b>Peak Torque</b>	720-860 lb-ft
<b>Governed Speed</b>	2200 rpm
<b>Number of Cylinders</b>	6
<b>System Weight</b>	1625 lbs
<b>Aftertreatment System</b>	147 lbs

<b>Horsepower</b>	250-280 hp
<b>Peak Torque</b>	730-900 lb-ft
<b>Governed Speed</b>	2200 rpm
<b>Number of Cylinders</b>	6
<b>System Weight</b>	1,625 lbs
<b>Aftertreatment System</b>	Three-Way Catalyst (TWC)



**Cummins ISL-G**

## Proven SCR Technology - Single Can Design



The next-generation system delivers a smaller, more compact solution, with reductions of up to 70 percent in space claim and 30 percent in weight compared to current combined Diesel Particulate Filter (DPF) and Selective Catalytic Reduction (SCR) systems in comparable markets.

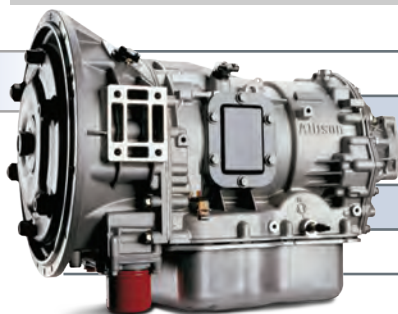
The single-cylinder design, which is enabled by the applications of advanced DPF and SCR catalyst technologies, offers improved particulate matter (PM) and oxides of nitrogen (NOx) reduction capabilities. Simplified packaging and optimized on-board diagnostics (OBD) creates a more robust and reliable system.



# ALLISON® PUPIL TRANSPORT SERIES™

Allison® transmissions provide customers with dependable and durable products that are easy and cost-effective to maintain year after year. With over 400,000 Allison equipped school buses, not only are you choosing the industry leader, you are choosing the transmission that has been proven for decades to work in the school bus industry.

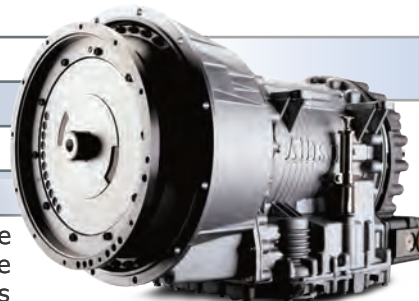
## 2000 PTS



<b>Torque</b>	Up to 660 lb-ft
<b>Operating Weight GVW</b>	33,000 lbs
<b>Dry Weight</b>	323 lbs
<b>Oil Capacity</b>	Approx. 13.7 quarts
<b>Compatible With</b>	Cummins® B6.7

<b>Torque</b>	Up to 950 lb-ft
<b>Operating Weight GVW</b>	36,200 lbs
<b>Dry Weight</b>	535 lbs
<b>Oil Capacity</b>	Approx. 29 quarts
<b>Compatible With</b>	Cummins® B6.7 Diesel Engine Cummins® L9 Diesel Engine Cummins® ISL-G Natural Gas

## 3000 PTS



## FUELSense® 2.0

with DynActive™ Shifting

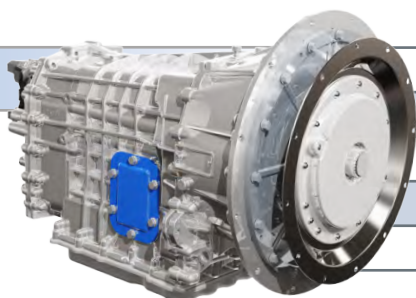
**Offered first-to-market by Blue Bird: FuelSense® 2.0** is a series of software packages designed to further reduce fuel consumption in all segments of a school bus duty cycle. Featuring DynActive™ Shifting, which provides an infinitely variable combination of shift points for increased efficiency, **FuelSense® 2.0** offers upgraded capability to improve your fuel economy and your bottom line.

<b>FuelSense 2.0</b> with DynActive Shifting	<b>FuelSense 2.0 Plus</b> with DynActive Shifting	<b>FuelSense 2.0 Max</b> with DynActive Shifting
Our standard package of FuelSense features	Adds an improved Neutral at Stop	Includes both Neutral at Stop and enhanced Acceleration Rate Management features

# EATON® PROCISION™

The Procision dual-clutch automatic transmission, currently offered on the All American FE, offers great low-speed maneuverability and fuel economy. It's exclusive Hill Helper and Creep Mode features give you more options while driving your All American bus. With a fluid change interval of **10 years, 150,000 miles**, it is possible that **you may never have to service a Procision transmission\***! Plus, the Procision comes with a **standard 5-year, unlimited-mile warranty**, giving you peace-of-mind.

## Procision



<b>Torque</b>	Up to 660 lb-ft
<b>Operating Weight GVW</b>	35,000 lbs
<b>Dry Weight</b>	364 lbs
<b>Oil Capacity</b>	Approx. 12.6 quarts
<b>Compatible With</b>	Cummins® B6.7 Diesel Engine

\*Depending on the user's duty cycles.

# All American SPECIFICATIONS

## All American RE Diesel



<b>OVERHANG</b>	Front: 95" with standard steel bumper Rear: 122" with standard steel bumper	<b>TRANSMISSION</b>	Allison® 2500 PTS - 5 & 6 speed automatic Allison® 3000 PTS - 5 & 6 speed automatic
<b>ENGINE</b>	Cummins® B6.7, 200-300 hp Cummins® L9, 260-300 hp	<b>BRAKES</b>	Air drum and air disc brakes available 4-channel antilock brake system
<b>FUEL TANK</b>	60-100 gallon	<b>WHEELBASE</b>	189" / 217" / 245" / 259" / 273"

## All American FE Diesel



<b>OVERHANG</b>	Front: 95" with standard steel bumper Rear: Varies by body length/wheelbase	<b>TRANSMISSION</b>	Allison® 2500 PTS - 5 & 6 speed automatic Allison® 3000 PTS - 5 & 6 speed automatic Eaton® Procision™ - 7 speed automatic
<b>ENGINE</b>	Cummins® B6.7, 200-280 hp	<b>BRAKES</b>	4-wheel hydraulic disc brakes with 4-channel antilock brake system; Air drum and air disc brakes available
<b>FUEL TANK</b>	60-100 gallon	<b>WHEELBASE</b>	141" / 169" / 190" / 211" / 232"
<b>REAR DOOR</b>	37" wide x 52" high		

## All American RE CNG

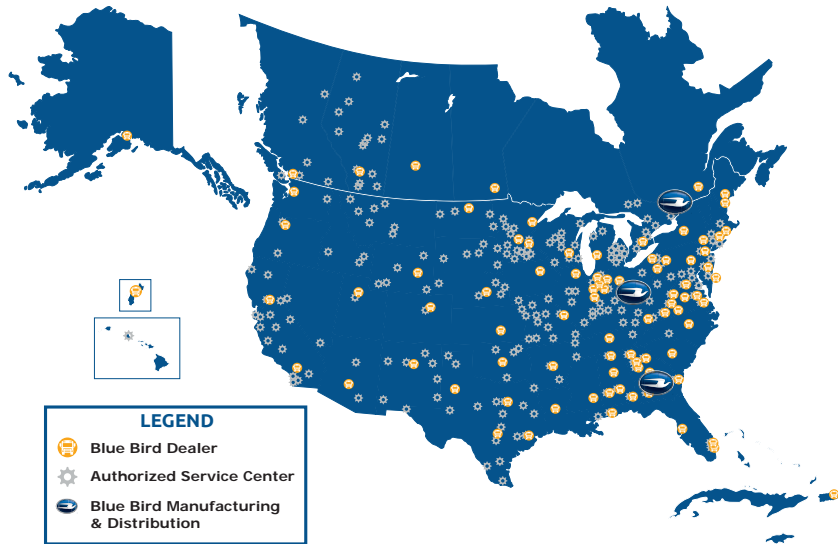


<b>OVERHANG</b>	Front: 95" with standard steel bumper Rear: 122" with standard steel bumper	<b>FUEL CAPACITY</b>	SAE Type III Composite wrapped aluminum located outboard of frame within wheelbase and inboard of frame in rear overhang  SCF @ 70F/3600PSI, 7692 DGE, 55 - GGE, 62
<b>ENGINE</b>	Cummins® ISL-G, 250-280 hp		
<b>TRANSMISSION</b>	Allison® 3000 PTS - 5 speed automatic		
<b>BRAKES</b>	Air drum and air disc brakes available 4-channel antilock brake system	<b>WHEELBASE</b>	189" / 217" / 245" / 259" / 273"





# Industry-Defining SERVICE AND PARTS



## Get Service When You Need It

At Blue Bird, we recognize that your new bus purchase is just one part of the equation. The North American Blue Bird Dealer Network, backed by the knowledgeable Blue Bird Parts and Service Team, has you covered for the life of your bus. The local parts, service, warranty, and genuine school bus expertise you need are readily available at hundreds of North American full-line dealers and dealer-authorized service centers.

## Access Important Documents Online

Access the current Driver Handbook, Service Manual and other technical references online at Blue Bird Vantage™—our online portal! You can access the website at:

**[vantage.blue-bird.com](http://vantage.blue-bird.com)**



## Top-Quality Parts

Blue Bird's extensive selection of top-quality parts is a foundational element of our promise to deliver exceptional quality, reliability and convenience to our customers. Blue Bird stocks the parts you need with the leading component brands you trust at industry-competitive prices.

## Well-Stocked Inventory

Our centrally located parts distribution center boasts 1.3 million cubic feet of clean, orderly, highly automated space with over 20,000 part numbers to quickly fulfill your parts needs. Contact your local Blue Bird dealer to get the parts you need, when you need them.





# The Blue Bird All American

## High-Capacity School Buses

At Blue Bird, **we are committed to reducing your total cost of ownership**, because we understand money saved over the years allows you to put more money back into the classroom.

Along with its exceptional driver visibility and maneuverability, the Blue Bird All American bus shares many body parts with the Blue Bird Vision bus, resulting in a reduction in parts and service complexity. With multiple fuel types and powertrain options available, **each bus is specifically tailored to each customer** - allowing you to choose what works best to reduce your total cost of ownership and your specific operating requirements.

From chassis to body to cockpit, the **Blue Bird All American** is a winner: a purpose-built school bus from a purpose-driven company that is clearly best-in-class.

## ALL AMERICAN TECHNICAL SPECIFICATION HIGHLIGHTS

<b>CAPACITY</b>	Multiple floor plans available with passenger seating <b>up to 84 (RE) and 90 (FE)</b>	<b>SUSPENSION</b>	Soft ride front leaf spring suspension (Rating varies by capacity); Two-stage steel leaf rear spring suspension system (rating varies by capacity); Air suspension available
<b>EXTERIOR WIDTH</b>	96"	<b>WHEEL CUT</b>	50°
<b>INTERIOR WIDTH</b>	90 3/4"	<b>STEERING</b>	Tilt & telescoping steering column
<b>aisle width</b>	Varies by floor plan	<b>INTERIOR HEIGHT</b>	77"
<b>SKIRT LENGTH</b>	Varies by fuel type; 19 3/4", 25 3/4"	<b>FRONT AXLE</b>	Front axle (rating varies by capacity)
<b>OVERALL HEIGHT</b>	122"-128" depending on options	<b>REAR AXLE</b>	Rear axle with hypoid, single reduction gears with broad range of ratios available to optimize powertrain performance (rating varies by capacity)
<b>ENTRANCE DOOR</b>	32" wide x 79" high/double electric outward opening (air optional)	<b>ALTERNATOR</b>	240, 270, and 320 amps with 12 volts
<b>OVERALL HEIGHT</b>	122" - 128"	<b>TIRE SIZE</b>	11R22.5 (G) all-position radials



**BLUE BIRD**  
BUILT TO TAKE ON TOMORROW.



Specifications, features, illustrations and equipment shown in this brochure are based upon the latest available information at the time of printing. Although descriptions are believed to be correct, accuracy cannot be guaranteed. Blue Bird Body Company reserves the right to make changes at any time without notice. Some features mentioned herein are not available in all models. Please see your Blue Bird Dealer for details. Blue Bird Body Company does not represent or warrant that its products are fit for a particular purpose. Purchaser must independently determine the suitability of the Blue Bird products for their particular application. All images contained herein are either owned by Blue Bird Body Company or used under a valid license. All trademarks used herein are registered trademarks of Blue Bird Body Company. It is a violation of federal law to reproduce these images without express written permission from Blue Bird Body Company. SB-AABROCHURE-0617© 2017 Blue Bird Corporation